

- ▶ GRP Panel Tank
- ▶ FRP Water Tank
- ▶ Steel Diesel Tank
- ▶ GLS TANK
- ▶ FRP Manhole



RIMAH

مصنع رماح الشرق للصناعات
**RIMAH AL SHRQ FACTORY
FOR INDUSTRIES**



RIMAH



ABOUT US

Rimah Al-Shrq Factory for Industries is located in Al Jubail ,Saudi Arabia. We are one of the leading manufacturer and suppliers and fiberglass based product in the Kingdom. Our products are made to confirm to the international Standard to quality and durability.

Rimah Al-Shrq Factory for Industries has achieved a steady growth by providing excellent quality product in compliance with universal application of international standards for maintaining exact quality in The production process as well as in the products.

Our Engineering Department is equipped with the latest technology of computerized design and drafting.

Beside a standard range of product, we can manufacture to customer's special design and specifications.

Our aim is to achieve customer's satisfaction through continuous improvement and proactive approach to Customer's requirement.



SERVICES WE CAN PROVIDE



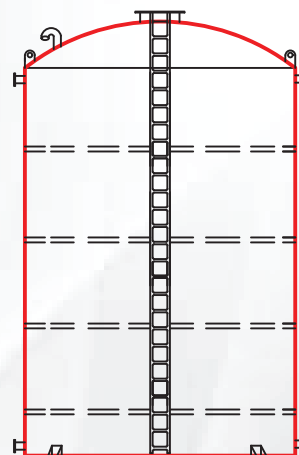
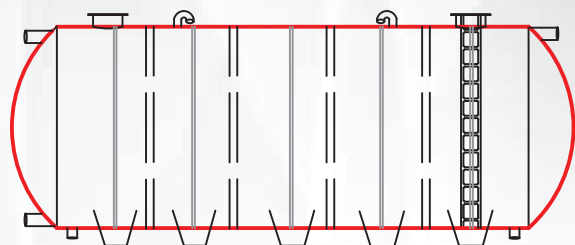
RIMAH

- ▶ Water tank (vertical & horizontal type)
- ▶ Sewage tank (Horizontal type)
- ▶ Fire water tank (vertical & horizontal type)
- ▶ Rectangular Tank & FRP Pickling Tank
- ▶ MANHOLE & Inspection Chamber
- ▶ FRP Diesel tank Chemical Tank (Vertical & Horizontal type)
- ▶ FRP Ladder & Safety Cage Ladder
- ▶ Portable Toilet & Shower Tray
- ▶ FRP Lining work (internal & External area)
- ▶ Chemical Tank (Vertical & Horizontal type)
- ▶ FRP Corrugated and Plain Sheet
- ▶ FRP Truck mounted tank
- ▶ Thermal Foam Insulated Water Storage Tank
- ▶ GRP Sectional Panel Tank (Rectangular type & Higher capacity Tank)
- ▶ GLS Tank (Cylindrical type & Higher capacity Tank)
- ▶ Custom made production & many more.



RIMAH

FRP ABOVE GROUND WATER TANK



Available Diameter

1200MM	1500MM	1600MM	1800MM
2000MM	2350MM	3000MM	3500MM

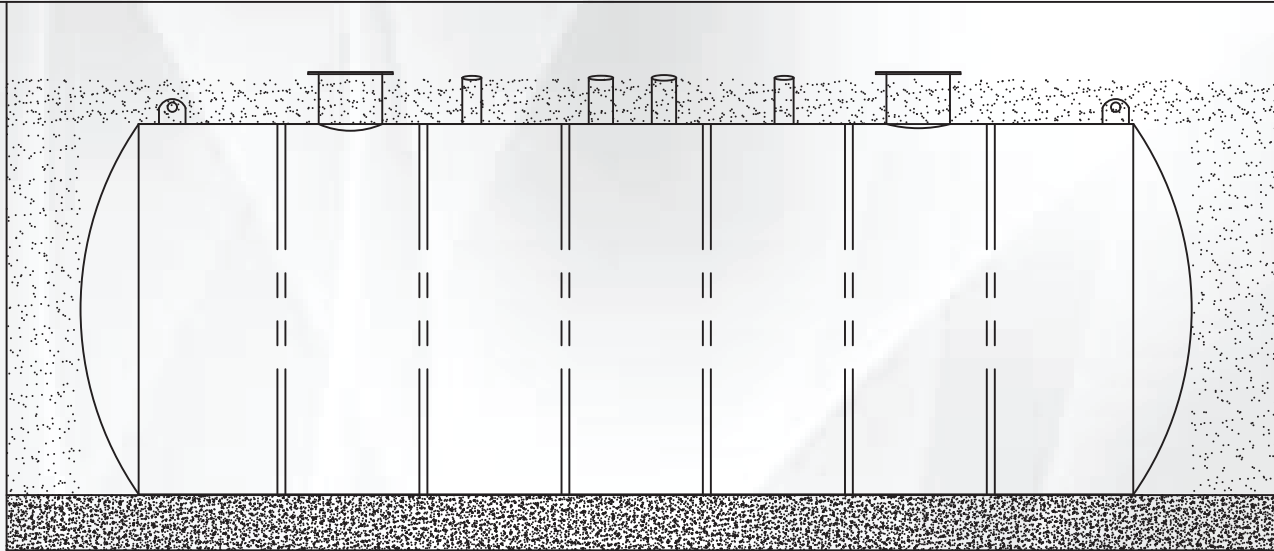
Fittings Details

MANHOLE / COVER	INLET PIPE	OUTLET PIPE	DRAIN PIPE
AIR VENT PIPE	OVER-FLOW PIPE	LEVEL GAUGE	FRP LADDER

Material Specification

Material of Fabrication	Fiberglass Reinforced Polyester (FRP)
External Color	White (UV resistance Gel Coat)
Temperature Resistance	Up to 87 Degree C
Density	1.60gm/cc
Glass Content	30% of weight
Surface finish	Inside Smooth moulded and outside matflow coat finish

FRP UNDERGROUND SEWAGE TANK



Available Diameter

1200MM	1500MM	1600MM	1800MM
2000MM	2350MM	3000MM	3500MM

Fittings Details

MANHOLE / COVER	INLET PIPE	OUTLET PIPE	AIR VENT PIPE	LIFTING HOOKS
-----------------	------------	-------------	---------------	---------------

Material Specification

Material of Fabrication	Fiberglass Reinforced Polyester (FRP)
External Color	Grey (UV resistance Gel Coat)
Temperature Resistance	Up to 87 Degree C
Density	1.60gm/cc
Glass Content	30% of weight
Surface finish	Inside Smooth moulded and outside matflow coat finish

GRP/FRP FIRE WATER TANK



Fire water storage tanks are used to provide facilities with potential fire hazards, directly controlling the amount of water necessary to ensure that fires can be put out in a timely manner and appropriate water resources are available

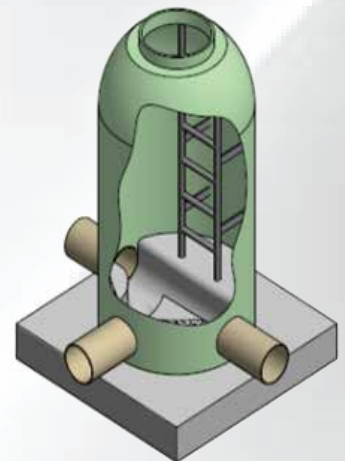
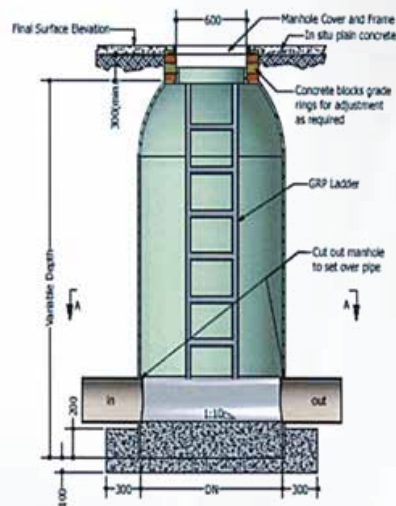


FRP Fire suppression tanks can be used both above and below ground, depending on the requirements. Building regulations are constantly becoming more stringent which can translate to a new fire suppression system being installed or updating the current system to meet the new standards. FRP has made a name for itself by the watertight nature of the design, making it the perfect unit for fire suppression storage that can also double as potable water. The lightweight composition makes it an easy install and a much easier product to ship compared to concrete or steel, meaning you only really need to be concerned about the weight of the water if you're installing an above-ground tank. For sites with difficult access, this is a very important aspect to consider.

FIRE WATER TANKS SUPPLIED FOR ALL INDUSTRY SECTORS INCLUDING:

- ▶ *Commercial industry - High-rise buildings*
- ▶ *Health care services - Hospitals & care homes*
- ▶ *Industrial services - warehouses, data centers*
- ▶ *Agricultural industry - Animal & food houses farming*
- ▶ *Domestic industry - Apartment buildings, large family dwellings, guesthouses*

GRP MANHOLES AND CHAMBERS



GRP STRUCTURAL MANHOLES & CHAMBERS BENEFITS & FEATURES

GRP Manholes and Chambers are made from Rimah Factory and fabricated and assembled to suit a specific project needs. Its design and manufactured is based on the same technology used in GRP Pipes. It is therefore guaranteed that each Manholes and Chambers are completely sealed, does not corrode, very durable, and can be easily and safely serviced and maintained. Like the GRP pipes, they are monolithic material and has a definite composition and material properties.

USES

Manholes and Chambers are used in underground piping system both for gravity or pressure applications allowing for the inspection and operation of pipelines and fittings. It allows easy access to storm and sanitary service lines for visual inspection or maintenance:

- *Cleaning and Flushing of drains or sewers;*
- *Ventilation of drains or sewers;*
- *Maintenance of water meters and fittings;*
- *Housing of pumping stations*

BENEFITS & FEATURES

Lightweight - no need for heavy-duty machineries during installation.

Easy Installation- no heavy footings, minor grouting necessary, easy inspection, smaller excavation, savings in installation time.

Non-corrosive- durable, safe, maintenance-free, internal and external-corrosion-free.

Reliable Product- dependable, dimensionally stable, uniform design.

GRP SECTIONAL PANEL TANKS



GRP panel type water tanks are a type of water storage system constructed using strong and durable Glass Reinforced Plastic panels. These tanks are designed to store water efficiently, making it readily available whenever needed. Whether for residential, commercial, or industrial use, GRP panel type water tanks provide an effective and reliable solution for water storage.



Water represents an essential need for our daily living, and having a sufficient supply is crucial. Whether it is for drinking, cooking, cleaning, or other purposes; having a reliable water storage system ensures continuous access to water, especially in areas with intermittent water supply or during emergencies.

Advantages of GRP Panel Type Water Tanks: *GRP panel type water tanks offer several advantages over traditional water storage systems. Let's explore some of their key benefits:*

Durability and Strength: *GRP panels are highly durable and possess excellent strength-to-weight ratio. These tanks can withstand harsh weather conditions, extreme temperatures, and physical impacts, ensuring long-lasting performance.*

Corrosion Resistance: *Unlike metal tanks, GRP panel type water tanks are corrosion-resistant. This feature is particularly important as it prevents water contamination and maintains the water's purity and quality.*

Different Sizes and Capacities:

GRP panel type water tanks are available in a wide range of sizes and capacities to suit different requirements. Whether you need a small tank for residential use or a large tank for industrial purposes, there is a suitable option available. When selecting a tank, consider factors such as the available space, water demand, and specific application.

Installation Process: *Installing a GRP panel type water tank involves several steps to ensure proper assembly and functionality. Here is a brief overview of the installation process*

Preparing the Site: *Begin by preparing the site where the tank will be installed. Clear any debris, level the ground, and ensure a stable foundation.*

Assembling the Panels: *Follow the manufacturer's instructions to assemble the GRP panels. Connect the panels securely, ensuring proper alignment and sealing.*

Residential Water Storage: *These tanks are ideal for residential buildings, providing a steady water supply for daily needs. They can be installed on rooftops, basements, or other designated areas.*

GLS- GLASS LINED STEEL TANKS



Highest corrosion resistance, fast and easy erection, possibility to remodel, extend and dismantle, maintenance free, long lifetime, cost effective, easy transport.

ADVANTAGE OF GLASS LINED TANK-

Cost effectiveness: *Low investment costs and minimal costs of maintenance.*

Small weight of carriage: *Due to the small measures and weights, it is possible to deliver bigger plants over great distances economically priced.*

Quick assembly: *By experienced assemblers with specific tools within shortest time - all-the-year. Quick and clean assembly is assured by a settlement of the project from our engineers.*

Sunfast: *Enameled surfaces can durable be exposed to an intensive insolation. Actually UV-exposure is not able to fade the color of the enamel.*

Flexibility: Adaptability to remodel, extend and dismantle the tank

Free of maintenance: Durable corrosion prevention due to the enamel redundantise maintenance.

Environmentally friendly: Enamel is manufactured from natural resources and employs environmentally friendly manufacturing and processing practices.

Fully recyclable: All components are fully recyclable.

Climate- and weather resistant: Enamel is frost resistant to -60°C and thermally stable to $+450^{\circ}\text{C}$. Within this range the characteristics of the enamel remain.

Non combustible: Enamel is not combustible and don't release toxic steams actually not at direct contact with fire, (class A according to DIN 4102)

Dimensionally stable: Due to the combination of the composite enamel and the steel.

Glass-hard and scratch resistant: Due to the constitution of the surface, enamel is not inferior in view to the typical tightness of glass against abrasion. Thus, the glass-hard surface of the enamel is very tough.

Graffiti resistant: Enamel is paint-resistant. Glue and other chemicals can be removed easily.

Hygienic: Numerous tests demonstrate that there is no culture medium for bacteria and other organisms at enamelled surfaces. So the plane enamelled surface is very hygienic.

Soil-resisting: There is no electrostatic charge at enamelled surfaces. Flue dust will not be gravitated by the enamel in contrast to synthetic materials.

Easy to clean: It is not possible for soil to cling to enamelled surfaces. Soilings can be wiped of easily -without polishing. You don't need any cleaning agent.

Physiological harmless: Enamelle





RIMAH

RIMAH PRODUCT GALLERY



RIMAH PRODUCT GALLERY





RIMAH





**Vendor No.
2584208**

**أرامكو السعودية
saudi aramco**



**Vendor No.
10066971**



RIMAH

**مصنع رماح الشرق للصناعات
RIMAH AL SHRQ FACTORY
FOR INDUSTRIES**

4225 - Oraifi Industrial Dist. Unit No. 18
AL Jubail 35526 - 7077, KSA

Email: marketing@rimahgroup.com - Mob.: +966 53 906 3153

www.rimahgroup.com